



# CAPITAL BUILD UPDATE TO THE CITIZENS ADVISORY COMMITTEE

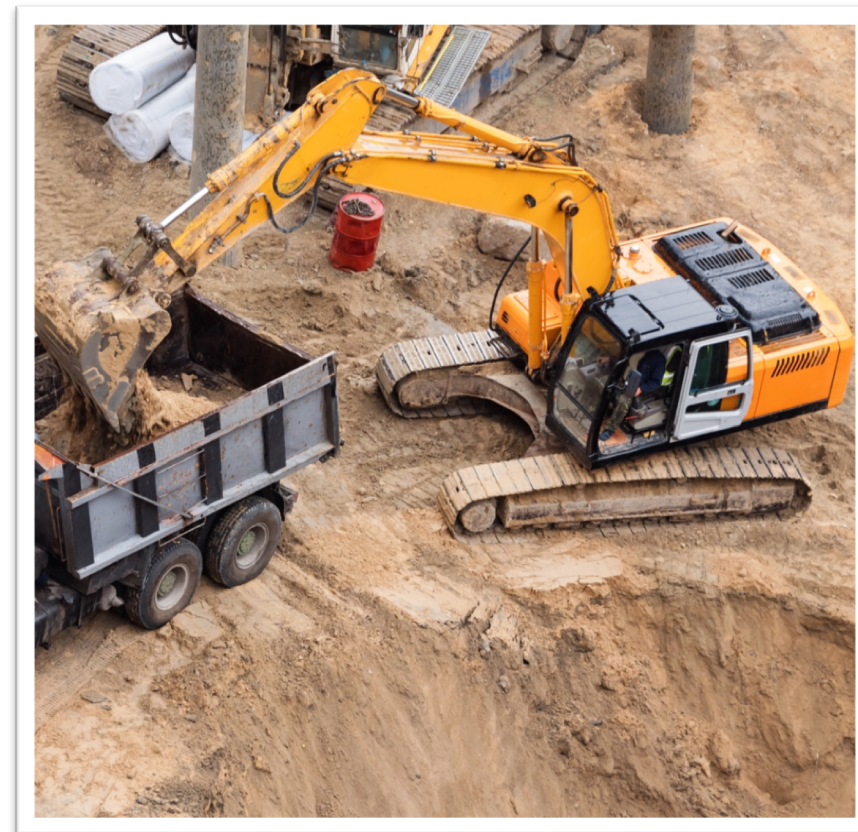
July 26, 2018

IMAGINE. DISCOVER. CULTIVATE.

# WORKFORCE

## HORIZONTAL INTEGRATED CONTRACT (HIC) PILOT IMPLEMENTATION

- Efforts To Date:
  - June 25<sup>th</sup> – HIC contract signed
  - July 9<sup>th</sup> – Workforce Kick-off meeting
- Next steps:
  - Work with contractor, Hensel Phelps, to create guidelines and 5-year program for Workforce Coordinator to support outreach efforts to targeted areas and populations
  - Develop HIC coordination with WORKNOW
  - Develop matrix for pilot baseline data



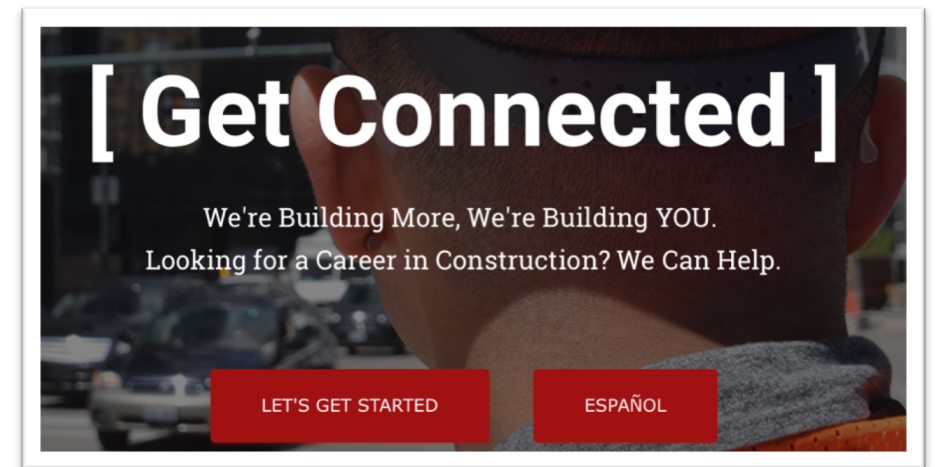
# WORKFORCE

## WORKNOW PILOT CONTRACT

The National Western Center Program and its partners will contribute \$550,000 to WORKNOW over the course of five years to support outreach efforts to targeted areas and populations.

NWC contract with WORKNOW will provide:

1. WORKNOW partner services
2. Training to provide workers with advanced skillsets to meet anticipated vertical building trade needs including carpenters, electricians, and HVAC technicians
3. Bilingual WORKNOW liaison with NWC, supporting outreach and access to WORKNOW services



# WORK UNDERWAY

## Campus Placemaking

### MIG, Inc.

- Design
- M/WBE Goal of 24%

Design and guidelines for public spaces, campus character, cultural plans, etc.

## Integrated Demolition

### Saunders Construction

- Integrated Construction
- M/WBE Goal of 18%

Property management, demolition, abatement & site remediation

## Brighton Boulevard - 3

### Kiewit / Hamon

- Integrated Construction
- M/WBE Goal of 14%

Widening of Brighton Blvd. for added lanes, walking, cycle, amenity zones & Race Ct. bridge

## DRIR Railroad

### Wilson & Company

- Design
- M/WBE Goal of 14%

Consolidation of the Denver Rock Island Railroad & replacement maintenance facility

## Maintenance & Ops

### SEH, Inc.

- Design
- M/WBE Goal of 30%

Renovation of existing building. Office/shop space, high bay vehicle maintenance, etc.

## Horizontal Portfolio

### Merrick & Company

- Design
- M/WBE Goal of 23%

Design services to enable the horizontal portfolio for the campus development

## Horizontal Integrated

### Hensel Phelps

- Integrated Construction
- M/WBE Goals assigned to each work order

Task and work order-based construction services to enable the horizontal portfolio





# ACTIVE PROCUREMENTS

## Stockyards & Stockyard Event Center - Design

### Open Procurement

- DESIGN
- M/WBE Goal of 30%
- RFQ released 6/29/18
- RFQ responses due 7/31/18

Engineering and architectural services for the 20-acre NWC Stockyards and 43,000 SF Stockyard Event Center



# FUTURE PROCUREMENTS

## Maintenance & Ops Facility Renovation Construction

### CM/GC

RFQ: July 2018  
Est. RFP: August 2018

Construction of the Maintenance and Operations Facility. Renovations include:

- Maintenance and Vehicle Shops with Yard
- Equipment and Material Storage
- Cattle Tie Out Areas for Annual Stock Show

## Stockyards & Stockyard Event Center Construction

### CM/GC

RFQ: July 2018  
Est. RFP: Sept. 2018

Construction of the Stockyard and Stockyards Event Center, including:

- 20 acres of Stockyards with 800+ removable pens
- Catwalks and building terraces
- Multi-use events and festival space during non-Stock Show times
- Stockyards Event Center facility, including a 1000-seat Arena with 2 show rings and a 600-seat Auction Arena

## Equestrian Center & Parking Garage Design & Construction

### DESIGN

RFQ: Sept. 2018  
Est. RFP: Nov. 2018

### CM/GC

RFQ: Nov. 2018  
Est. RFP: Dec. 2018

Design & Construction of the Equestrian Center and Parking Garage, including:

- 4,500 Seat Event Center
- 500 Equestrian Show Arena
- 700-800 stall Horse Barn
- Two Paddocks and Covered Open-Air Warm Up areas
- 1,050 car Parking Garage

## Livestock Center Design & Construction

### DESIGN

RFQ: Early 2019  
Est. RFP: Mid 2019

### CM/GC

RFQ: Mid 2019  
Est. RFP: Fall 2019

Design & Construction of the Maintenance and Operations Facility Renovation, including:

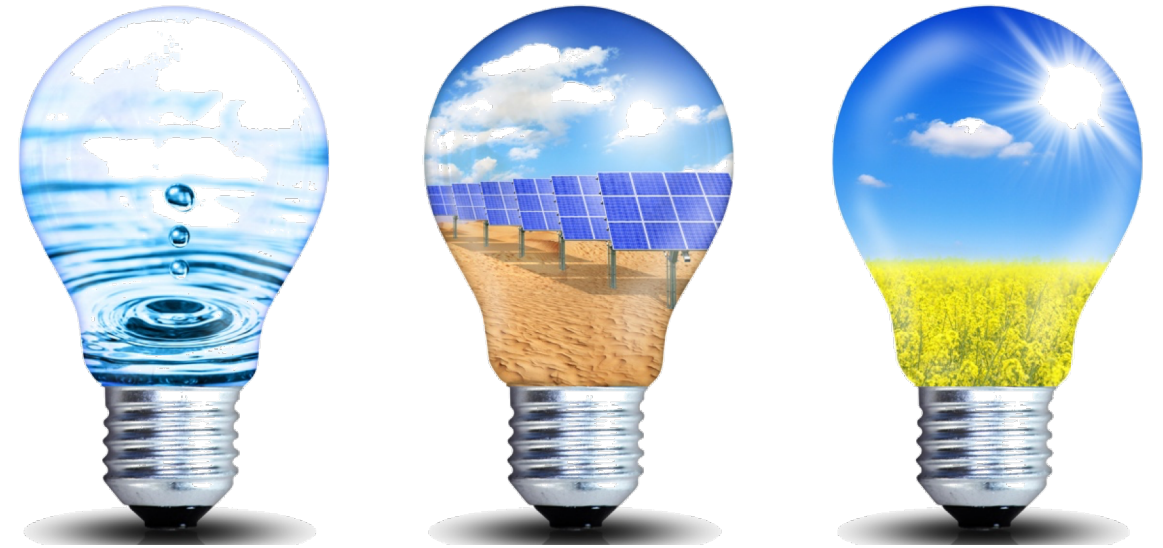
- Maintenance and Vehicle Shops with Yard
- Equipment and Material Storage
- Cattle Tie Areas for Annual Stock Show



# CAMPUS ENERGY UPDATE

## MEETING NWC ENERGY GOALS THROUGH PARTNERSHIPS

- Goal: seek a construction and financing partner to optimize NWC campus energy toward creation of a Zero Energy District focusing on solar and sewer heat recovery
- Request for Qualifications (RFQ) yielded responses from seven highly-qualified national and international teams
- Request for Proposals (RFP) includes a Community Collaboration proposal where responders specify how they can serve the broader community



IMAGINE. DISCOVER. CULTIVATE.

# NWC STRATEGIC PARTNERSHIPS AND CAMPUS WIDE SERVICES

Campus Wide Partnership	Horizontal Priority	Vertical Priority	NWCO Sponsor	Project Manager
Energy	1	1	Brad Dodson	Barb Frommell
Water (Denver Water)	1	2	Brad Dodson	Barb Frommell
Wastewater (Metro)	1	N/A	Brad Dodson	Barb Frommell
IT Infrastructure	1	2	Brad Dodson	Eric Shafran
Concessions (Food, Beverage, Retail)	3	2	Brad Dodson	Eric Shafran
Wayfinding, Signage, Advertising	2	3	Brad Dodson	Barb Frommell





# THE TRIANGLE

## FUTURE PHASES FOR THE CAMPUS

### Four Required Assets:

- Redeveloped 1909 Historic Building
- New 10,000-Seat Arena
- New Expo Hall
- Supporting Structured Parking

Additional supporting development to activate the campus year-round



### Estimated Procurement Timeline:

2018 3<sup>rd</sup> Quarter

2018 4<sup>th</sup> Quarter

2019

PBI Coordination

RFQ Issued

RFP Issued

Community / Citizens Advisory Committee Outreach



IMAGINE. DISCOVER. CULTIVATE.



# PERFORMANCE BASED INFRASTRUCTURE

DENVER IS FINALIZING A PBI PROGRAM AND PBI  
FOR LAUNCH SUMMER 2018

# PBI



Establish a neutral, standardized and transparent process to evaluate and execute potential partnerships with the private sector to deliver public infrastructure

Ensure any potential projects stays true to Denver's core values of inclusion, equity, and economic opportunities for all